



STUDENT WORKBOOK

Flexible Link Experiment for **MATLAB®/Simulink®** Users

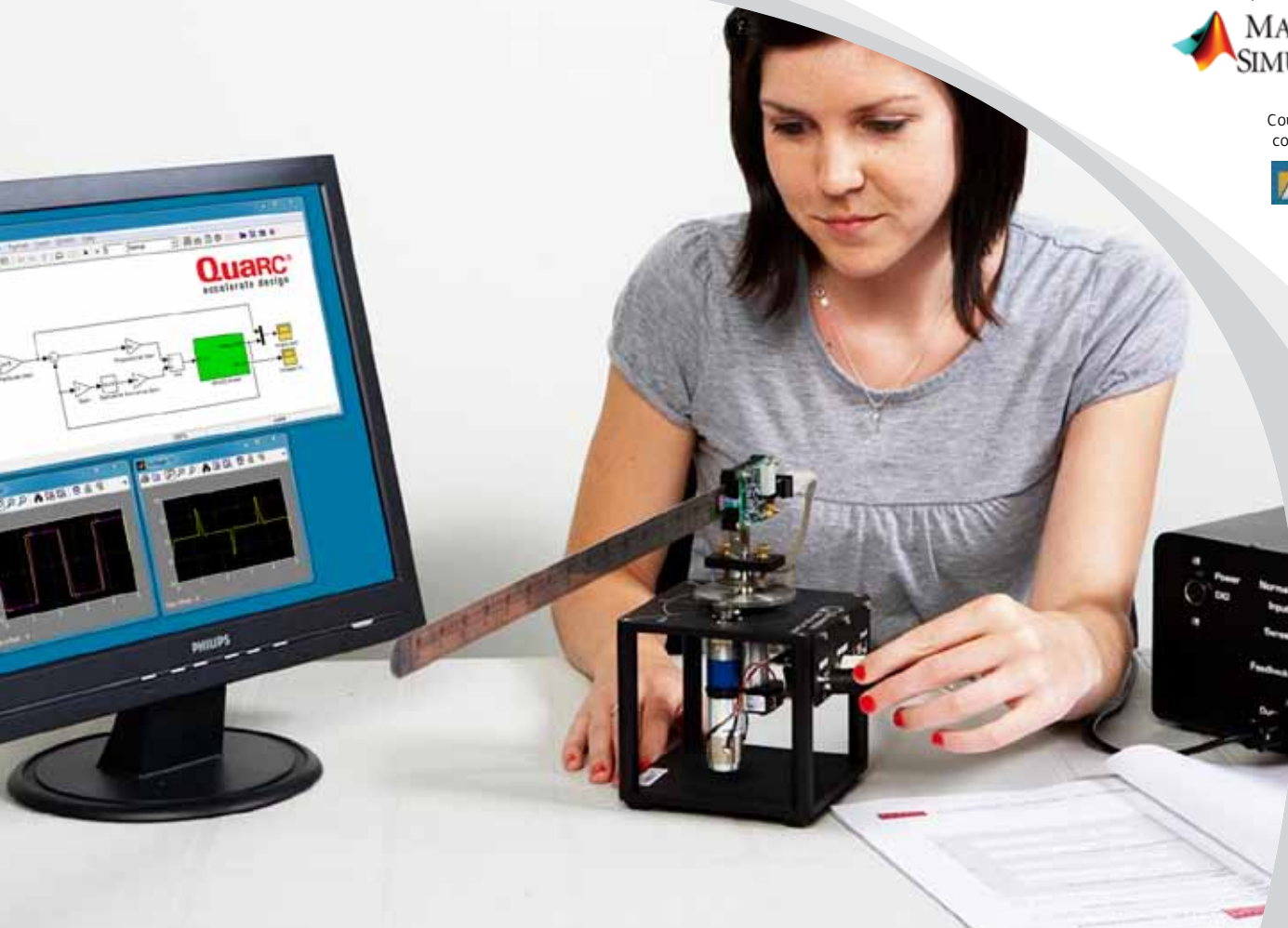
Standardized for ABET* Evaluation Criteria

Developed by:
Jacob Apkarian, Ph.D., Quanser
Paul Karam, B.A.S.C., Quanser
Michel Lévis, M.A.S.C., Quanser

SRV02 educational solutions
are powered by:



Course material
complies with:



CAPTIVATE. MOTIVATE. GRADUATE.

*ABET Inc., is the recognized accreditor for college and university programs in applied science, computing, engineering, and technology. Among the most respected accreditation organizations in the U.S., ABET has provided leadership and quality assurance in higher education for over 75 years.

© 2011 Quanser Inc., All rights reserved.

Quanser Inc.
119 Spy Court
Markham, Ontario
L3R 5H6
Canada
info@quanser.com
Phone: 1-905-940-3575
Fax: 1-905-940-3576

Printed in Markham, Ontario.

For more information on the solutions Quanser Inc. offers, please visit the web site at:
<http://www.quanser.com>

This document and the software described in it are provided subject to a license agreement. Neither the software nor this document may be used or copied except as specified under the terms of that license agreement. All rights are reserved and no part may be reproduced, stored in a retrieval system or transmitted in any form or by any means, electronic, mechanical, photocopying, recording, or otherwise, without the prior written permission of Quanser Inc.

ACKNOWLEDGEMENTS

Quanser, Inc. would like to thank Dr. Hakan Gurocak, Washington State University Vancouver, USA, for his help to include embedded outcomes assessment.

CONTENTS

1	Introduction	4
2	Modeling	5
2.1	Background	5
2.2	Pre-Lab Questions	10
2.3	Lab Experiments	11
2.4	Results	15
3	Control Design	16
3.1	Specifications	16
3.2	Background	16
3.3	Pre-Lab Questions	18
3.4	Lab Experiments	19
3.5	Results	23
4	System Requirements	24
4.1	Overview of Files	25
4.2	Setup for Finding Stiffness	25
4.3	Setup for Model Validation	26
4.4	Setup for Flexible Link Control Simulation	26
4.5	Setup for Flexible Link Control Implementation	27
5	Lab Report	28
5.1	Template for Content (Modeling)	28
5.2	Template for Content (Control)	29
5.3	Tips for Report Format	30

1 INTRODUCTION

The objective of this experiment is to control the position of the servo while minimizing the motions the flexible rotary link.

Topics Covered

- Modeling the Rotary Flexible Link using Lagrange.
- Find the linear state-space model of the system.
- Do some basic model validation.
- Design an state-feedback controller using Linear-Quadratic Regulator (LQR) algorithm through simulation.
- Implement the designed LQR controller on the device.
- Compare the simulated and measured closed-loop results.
- Assess the behaviour of implementing a partial-state feedback controller.

Prerequisites

In order to successfully carry out this laboratory, the user should be familiar with the following:

- Basics of [Simulink®](#).
- Transfer function fundamentals.
- State-space modeling, e.g., obtaining state equations from a set of differential equations.
- *SRV02 QUARC Integration Laboratory* ([2]) in order to be familiar using [QUARC®](#) with the SRV02.

2 MODELING

2.1 Background

2.1.1 Model

The Rotary Flexible Link model is shown in Figure 2.1. The base of the flexible link is mounted on the load gear of the SRV02 system. The servo angle, θ , increases positively when it rotates counter-clockwise (CCW). The servo (and thus the link) turn in the CCW direction when the control voltage is positive, i.e., $V_m > 0$.

The flexible link has a total length of L_l , a mass of m_l , and its moment of inertia about the center of mass is J_l . See the *Rotary Flexible Link User Manual* (in [7]) for the values of these parameters. The deflection angle of the link is denoted as α and increases positively when rotated CCW.

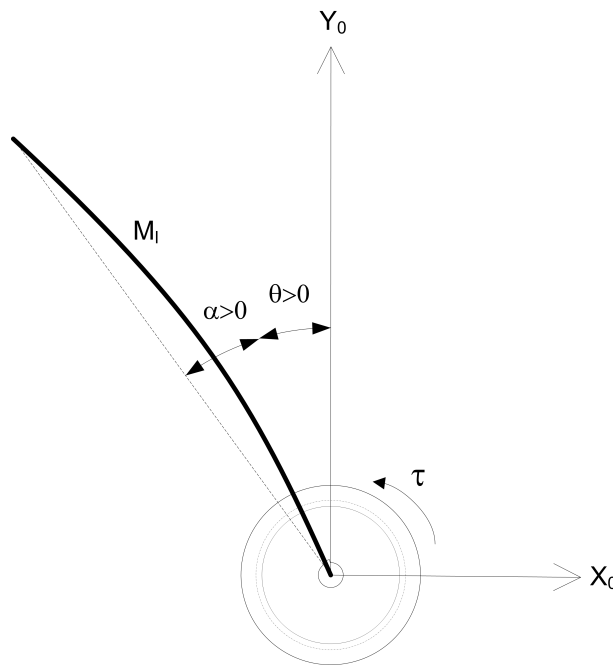


Figure 2.1: Rotary Flexible Link Angles

The flexible link system can be represented by the diagram shown in Figure 2.2. Our control variable is the input servo motor voltage, V_m . This generates a torque, τ , at the load gear of the servo that rotates the base of the link. The viscous friction coefficient of the servo is denoted by B_{eq} . This is the friction that opposes the torque being applied at the servo load gear. The friction acting on the link is represented by the viscous damping coefficient B_L . Finally, the flexible link is modeled as a linear spring with the stiffness K_s .

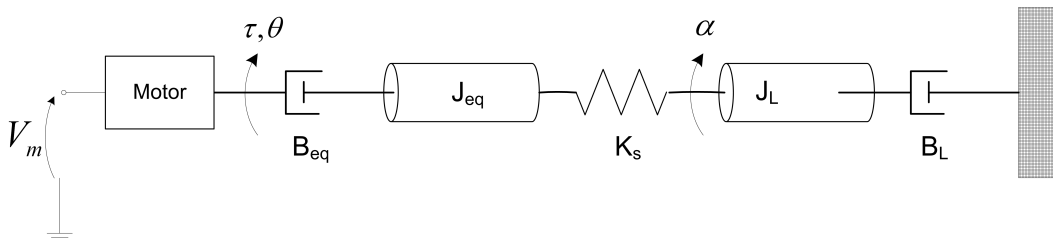


Figure 2.2: Rotary Flexible Link Model

2.1.2 Finding the Equations of Motion

Instead of using classical mechanics, the Lagrange method is used to find the equations of motion of the system. This systematic method is often used for more complicated systems such as robot manipulators with multiple joints.

More specifically, the equations that describe the motions of the servo and the link with respect to the servo motor voltage, i.e. the dynamics, will be obtained using the Euler-Lagrange equation:

$$\frac{\partial^2 L}{\partial t \partial \dot{q}_i} - \frac{\partial L}{\partial q_i} = Q_i \quad (2.1)$$

The variables q_i are called *generalized coordinates*. For this system let

$$q(t)^\top = [\theta(t) \ \alpha(t)] \quad (2.2)$$

where, as shown in Figure 2.2, $\theta(t)$ is the servo angle and $\alpha(t)$ is the flexible link angle. The corresponding velocities are

$$\dot{q}(t)^\top = \left[\frac{\partial \theta(t)}{\partial t} \quad \frac{\partial \alpha(t)}{\partial t} \right] \quad (2.3)$$

Note: The dot convention for the time derivative will be used throughout this document, i.e., $\dot{\theta} = \frac{d\theta}{dt}$ and $\dot{\alpha} = \frac{d\alpha}{dt}$. The time variable t will also be dropped from θ and α , i.e., $\theta := \theta(t)$ and $\alpha := \alpha(t)$.

With the generalized coordinates defined, the Euler-Lagrange equations for the rotary flexible link system are

$$\frac{\partial^2 L}{\partial t \partial \dot{\theta}} - \frac{\partial L}{\partial \theta} = Q_1 \quad (2.4)$$

and

$$\frac{\partial^2 L}{\partial t \partial \dot{\alpha}} - \frac{\partial L}{\partial \alpha} = Q_2 \quad (2.5)$$

The Lagrangian of a system is defined

$$L = T - V \quad (2.6)$$

where T is the total kinetic energy of the system and V is the total potential energy of the system. Thus the Lagrangian is the difference between a system's kinetic and potential energies.

The generalized forces Q_i are used to describe the non-conservative forces (e.g., friction) applied to a system with respect to the generalized coordinates. In this case, the generalized force acting on the rotary arm is

$$Q_1 = \tau - B_{eq} \dot{\theta} \quad (2.7)$$

and acting on the link is

$$Q_2 = -B_l \dot{\alpha}. \quad (2.8)$$

The torque applied at the base of the rotary arm (i.e., at the load gear) is generated by the servo motor as described by the equation

$$\tau = \frac{\eta_g K_g \eta_m k_t (V_m - K_g k_m \dot{\theta})}{R_m}. \quad (2.9)$$

See [4] for a description of the corresponding SRV02 parameters (e.g. such as the back-emf constant, k_m). The servo damping (i.e. friction), B_{eq} , opposes the applied torque. The flexible link is not actuated, the only force acting on the link is the damping, B_l .

Again, the Euler-Lagrange equations is a systematic method of finding the equations of motion (EOMs) of a system. Once the kinetic and potential energy are obtained and the Lagrangian is found, then the task is to compute various derivatives to get the EOMs.

2.1.3 Potential and Kinetic Energy

Kinetic Energy

Translational kinetic equation is defined as

$$T = \frac{1}{2}mv^2, \quad (2.10)$$

where m is the mass of the object and v is the linear velocity.

Rotational kinetic energy is described as

$$T = \frac{1}{2}J\omega^2 \quad (2.11)$$

where J is the moment of inertia of the object and ω is its angular rate.

Potential Energy

Potential energy comes in different forms. Typically in mechanical system we deal with *gravitational* and *elastic* potential energy. The *relative* gravitational potential energy of an object is

$$V_g = mg\Delta h, \quad (2.12)$$

where m is the object mass and Δh is the change in altitude of the object (from a reference point). The potential energy of an object that rises from the table surface (i.e., the reference) up to 0.25 meter is $\Delta h = 0.25 - 0 = 0.25$ and the energy stored is $V_g = 0.25mg$.

The equation for elastic potential energy, i.e., the energy stored in a spring, is

$$V_e = \frac{1}{2}K\Delta x^2 \quad (2.13)$$

where K is the spring stiffness and Δx is the linear or angular change in position. If an object that is connected to a spring moves from its initial reference position to 0.1 m, then the change in displacement is $\Delta x = 0.1 - 0 = 0.1$ and the energy stored equals $V_e = 0.005K$.

2.1.4 Linear State-Space Model

The linear state-space equations are

$$\dot{x} = Ax + Bu \quad (2.14)$$

and

$$y = Cx + Du \quad (2.15)$$

where x is the state, u is the control input, A , B , C , and D are state-space matrices. For the Rotary Flexible Link system, the state and output are defined

$$x^T = [\theta \ \alpha \ \dot{\theta} \ \dot{\alpha}] \quad (2.16)$$

and

$$y^T = [x_1 \ x_2]. \quad (2.17)$$

In the output equation, only the position of the servo and link angles are being measured. Based on this, the C and D matrices in the output equation are

$$C = \begin{bmatrix} 1 & 0 & 0 & 0 \\ 0 & 1 & 0 & 0 \end{bmatrix} \quad (2.18)$$

and

$$D = \begin{bmatrix} 0 \\ 0 \end{bmatrix}. \quad (2.19)$$

The velocities of the servo and link angles can be computed in the digital controller, e.g., by taking the derivative and filtering the result through a high-pass filter.

2.1.5 Free-Oscillation of a Second Order System

The free-oscillatory equation of motion of a second-order system described by

$$J\ddot{x} + B\dot{x} + Kx = 0 \quad (2.20)$$

is shown in Figure 2.3. Assuming the initial conditions $x(0^-) = x_0$ and $\dot{x}(0^-) = 0$, the Laplace transform of Equation 2.20 is

$$X(s) = \frac{\frac{x_0}{J}}{s^2 + \frac{B}{J}s + \frac{K}{J}} \quad (2.21)$$

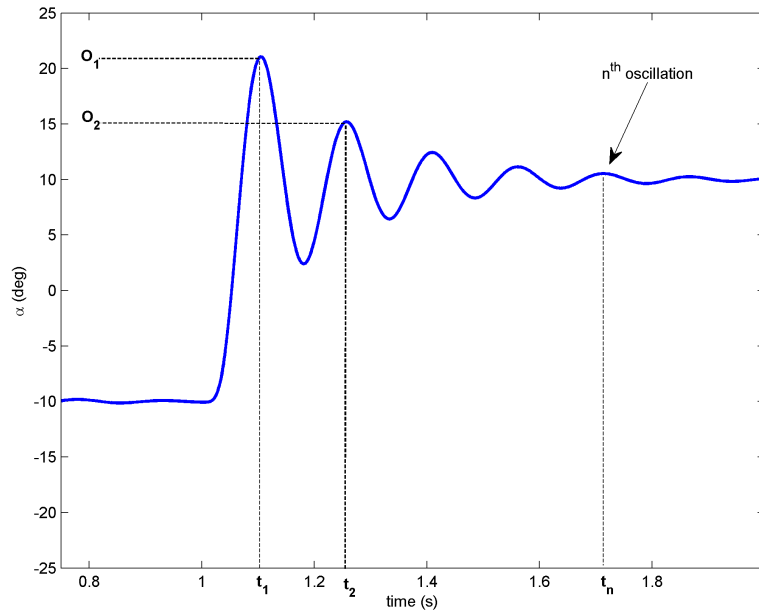


Figure 2.3: Free Oscillation Response

The prototype second-order equation is defined

$$s^2 + 2\zeta\omega_n s + \omega_n^2, \quad (2.22)$$

where ζ is the damping ratio and ω_n is the natural frequency. Equating the characteristic equation in 2.21 to this gives

$$\omega_n^2 = \frac{K}{J} \quad (2.23)$$

and

$$2\zeta\omega_n = \frac{B}{J} \quad (2.24)$$

Based on the measured damping ratio and natural frequency, the friction (or stiffness) of the system is

$$K = J\omega_n^2 \quad (2.25)$$

and the viscous damping is

$$B = 2\zeta\omega_n J. \quad (2.26)$$

Finding the Natural Frequency

The period of the oscillations in a system response can be found using the equation

$$T_{osc} = \frac{t_{n+1} - t_1}{n} \quad (2.27)$$

where t_n is the time of the n^{th} oscillation, t_1 is the time of the first peak, and n is the number of oscillations considered. From this, the damped natural frequency (in radians per second) is

$$\omega_d = \frac{2\pi}{T_{osc}} \quad (2.28)$$

and the undamped natural frequency is

$$\omega_n = \frac{\omega_d}{\sqrt{1 - \zeta^2}}. \quad (2.29)$$

Finding the Damping Ratio

The damping ratio of a second-order system can be found from its response. For a typical second-order under-damped system, the subsidence ratio (i.e., decrement ratio) is defined as

$$\delta = \frac{1}{n} \ln \frac{O_1}{O_n} \quad (2.30)$$

where O_1 is the peak of the first oscillation and O_n is the peak of the n^{th} oscillation. Note that $O_1 > O_n$, as this is a decaying response.

The damping ratio is defined

$$\zeta = \frac{1}{\sqrt{1 + \frac{2\pi^2}{\delta}}} \quad (2.31)$$

2.2 Pre-Lab Questions

1. Energy is stored in the flexible link, i.e., the "spring", as it *flexes* by an angle of α (see Figure 2.1). Find the potential energy of the flexible link. Use the parameters shown in Figure 2.2.
2. Find the total kinetic energy of the system contributed by the rotary servo, θ , and the deflection in the link, α . Use the parameters shown in Figure 2.2.
3. Compute the Lagrangian of the system.
4. Find the first Euler-Lagrange equation given in 2.4. Keep the equations in terms of applied torque, τ (i.e., not in terms of DC motor voltage). Also make sure your equations follow the general form: $J\ddot{x} + B\dot{x} + Kx = u$.
5. Find the second Euler-Lagrange Equation 2.5.
6. Find the equations of motion: $\ddot{\theta} = f_1(\theta, \dot{\theta}, \alpha, \dot{\alpha}, \tau)$ and $\ddot{\alpha} = f_2(\theta, \dot{\theta}, \alpha, \dot{\alpha}, \tau)$. Assume the viscous damping of the link is negligible, i.e., $B_l = 0$.
7. Given state x defined in Equation 2.16, find the linear state-space matrices A and B .
8. Find the the natural frequency of the response shown in Figure 2.3 if the peak values for the first and fifth oscillation are: $t_1 = 1.12$ and $t_5 = 1.71$ seconds. Because the damping is low, assume the damped and undamped natural frequency are equivalent.

2.3 Lab Experiments

In the first part of this laboratory, the stiffness of the flexible link is determined by measuring its natural frequency. In the second part, the state-space model is finalized and validated against actual measurements.

2.3.1 Finding Stiffness

In Section 2.1.5 we found an equation describing the free-oscillation response of a second-order system. This can also be used to describe the response of the flexible link when initially perturbed and left to decay.

Physical Parameters for the Lab

In order to do some of the laboratory exercises, you will need these values:

$$\begin{aligned}B_{eq} &= 0.004 \text{ N} \cdot \text{m} / (\text{rad/s}) \\J_{eq} &= 2.08 \times 10^{-3} \text{ kg} \cdot \text{m}^2 \\m_l &= 0.065 \text{ kg} \\L_l &= 0.419 \text{ m}\end{aligned}$$

Note: The equivalent viscous damping, B_{eq} , and moment of inertia, J_{eq} , parameters are for the SRV02 when there is no load (i.e., the parameter found in the SRV02 Modeling Laboratory was for servo with the disc load).

Experimental Setup

The `q_flexgag_id` Simulink diagram shown in Figure 2.4 is used to find the natural frequency of the flexible link. The QUARC blocks are used to interface with strain gage sensor of the system. For more information about QUARC, see Reference [2]. This model outputs the deflection angle of the link.

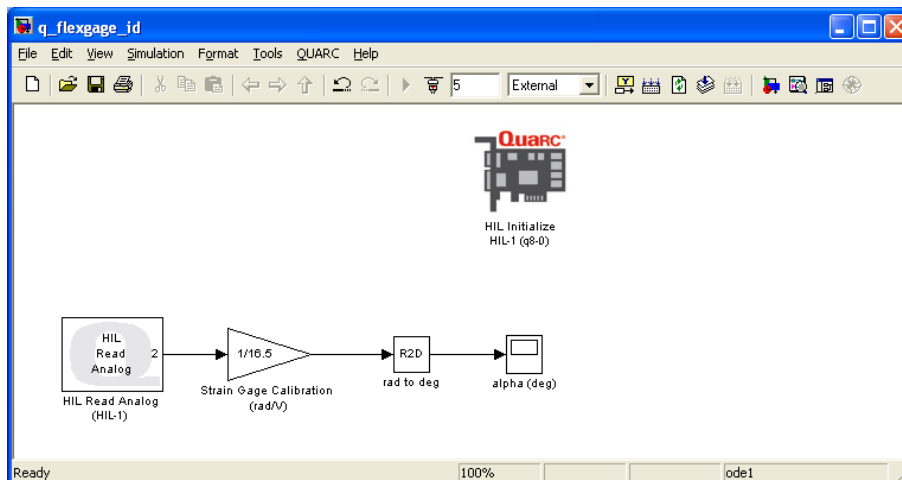


Figure 2.4: `q_flexgag_id` Simulink diagram used to find link stiffness

IMPORTANT: Before you can conduct this experiment, you need to make sure that the lab files are configured according to your system setup. If they have not been configured already, then you need to go to Section 4.2 to configure the lab files first.

1. In the `q_flexgag_id` Simulink diagram, go to QUARC | Build to build the QUARC controller.
2. Hold on the SRV02 load gear, go to QUARC | Start to run the controller, and then immediately perturb the flexible link. Keep holding the SRV02 base until the controller is done collecting the data. The *alpha (deg)* Scope should be reading a response similarly as shown in Figure 2.5. Note that the controller is set to run for 5 seconds.

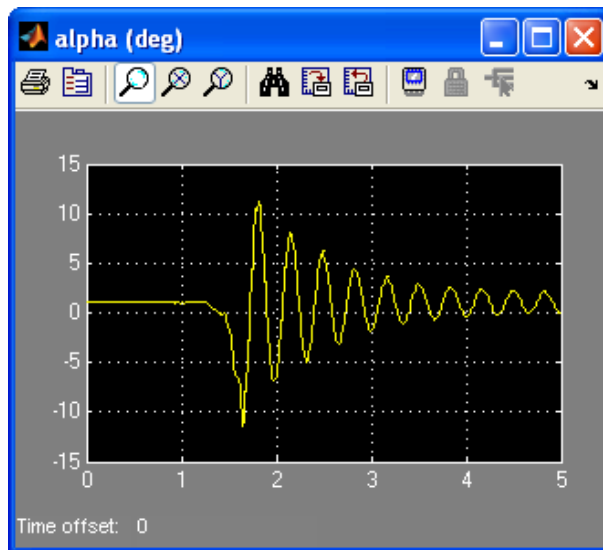


Figure 2.5: Typical Flexible Link Free-Oscillation Response

3. After the controller stops (i.e., after 5 sec), the data is automatically saved in the Matlab workspace to the variable *data_alpha*. The time is stored in *data_alpha(:,1)* vector and the flexible link angle is stored the *data_alpha(:,2)* vector. Plot the response in a Matlab figure.
4. Find the natural frequency of the link. As in Pre-Lab Question 8, the damping is low. Therefore assume the damped natural frequency (which is being measured) is equivalent to the undamped natural frequency.
5. Calculate the stiffness of the flexible link, K_s .
Hint: Assume the link is a rod when finding the moment of inertia of the link, J_l .

2.3.2 Model Validation

By running a simulation and the actual device in parallel, we can verify whether the dynamic model (which drives the simulation) accurately represents our system.

Experimental Setup

The *q_flexgage_val* Simulink diagram shown in Figure 2.6 applies either a step or pulse input to both the Quanser Flexible Link hardware and to the Flexible Link model and reads the servo and link angles. The *SRV02 Flexible Link* subsystem contains the QUARC blocks that interface to the actual hardware. The Simulink *State-Space* block reads the *A*, *B*, *C*, and *D* state-space matrices that are loaded in the Matlab workspace. This model outputs the deflection angle of the link.

IMPORTANT: Before you can conduct this experiment, you need to make sure that the lab files are configured according to your system setup. If they have not been configured already, then go to Section 4.3 to configure the lab files first.

1. Run the *setup_flexgage.m*.
2. When prompted, enter the stiffness you found in Section 2.3.1. This is saved to the Matlab variable *Ks*.

Enter link stiffness (Ks):

3. Depending on your stiffness, the Matlab prompt should generate a gain similarly as shown below (this gain is generated for a *Ks* of 1):

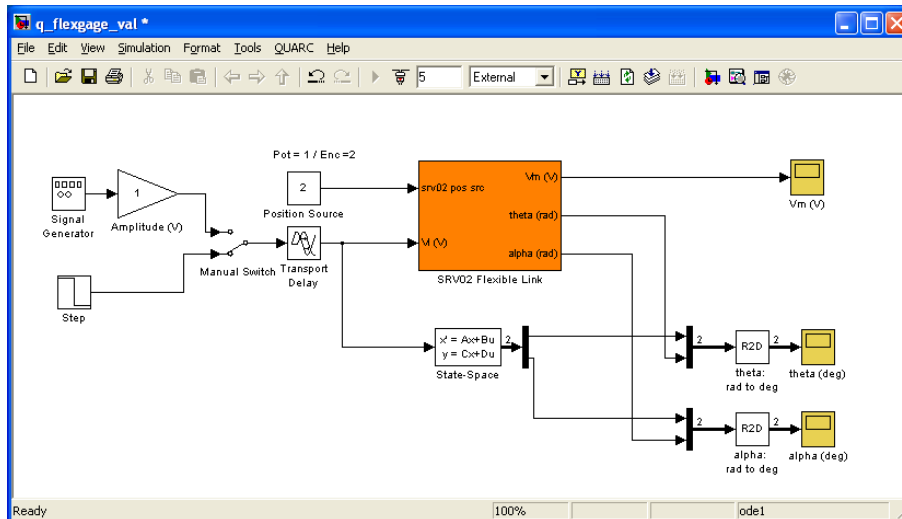


Figure 2.6: q_flexgag_val Simulink diagram used validate the model

K =

1.0000 -8.7209 0.6264 -0.3958

This means the script ran correctly.

- In Matlab, open the M-File called *FLEXGAGE_ABCD_eqns_student.m*. The script has the following state-space matrices entered:

$$A = \begin{bmatrix} 0 & 0 & 1 & 0; \\ 0 & 0 & 0 & 1; \\ 0 & 500 & -5 & 0; \\ 0 & -750 & 5 & 0 \end{bmatrix};$$

$$B = [0 \ 0 \ 500 \ -500]';$$

$$C = \text{zeros}(2,4);$$

$$D = \text{zeros}(2,1);$$

- Enter the state-space matrices you found in Section 2.2 for A , B , C , and D . In Matlab, the stiffness and link moment of inertia are defined as K_s and J_l and the SRV02 inertia and damping are denoted J_{eq} and B_{eq} .
- Run the *FLEXGAGE_ABCD_eqns_student.m* script to load the state-space matrices in the Matlab workspace. Show the numerical matrices that are displayed in the Matlab prompt.
- The input of the state-space model you found in Section 2.2 is the torque acting at the servo load gear (or the pivot of the flexible link). However, *we do not control torque directly - we control the servo input voltage*. Recall the voltage-torque relationship given in Equation 2.9 in Section 2.1.2. In the *System Model* section of the *setup_flexgag.m* script, the actuator dynamics are added to your state-space matrices with the code:

```
Ao = A;
Bo = B;
B = eta_g*Kg*eta_m*kt/Rm*Bo;
A(3,3) = Ao(3,3) - Bo(3)*eta_g*Kg^2*eta_m*kt*km/Rm;
A(4,3) = Ao(4,3) - Bo(4)*eta_g*Kg^2*eta_m*kt*km/Rm;
```

- Run the *setup_flexgag.m* script again so your Flexible Link model is based on dc motor voltage.

9. In the *q.flexgage_val* Simulink diagram, go to QUARC | Build to build the QUARC controller.
10. Make sure the area around the Flexible Link experiment is clear. Set the *Manual Switch* to the downward position to feed a Step input.
11. Go to QUARC | Start to run the *q.flexgage_val* controller. Typical scope responses are shown in Figure 2.7a and Figure 2.7b. The *theta (deg)* scope displays the simulated servo angle in yellow and the measured angle in purple. Similarly, the *alpha (deg)* scope shows the simulated link angle in yellow and the measured angle in purple.

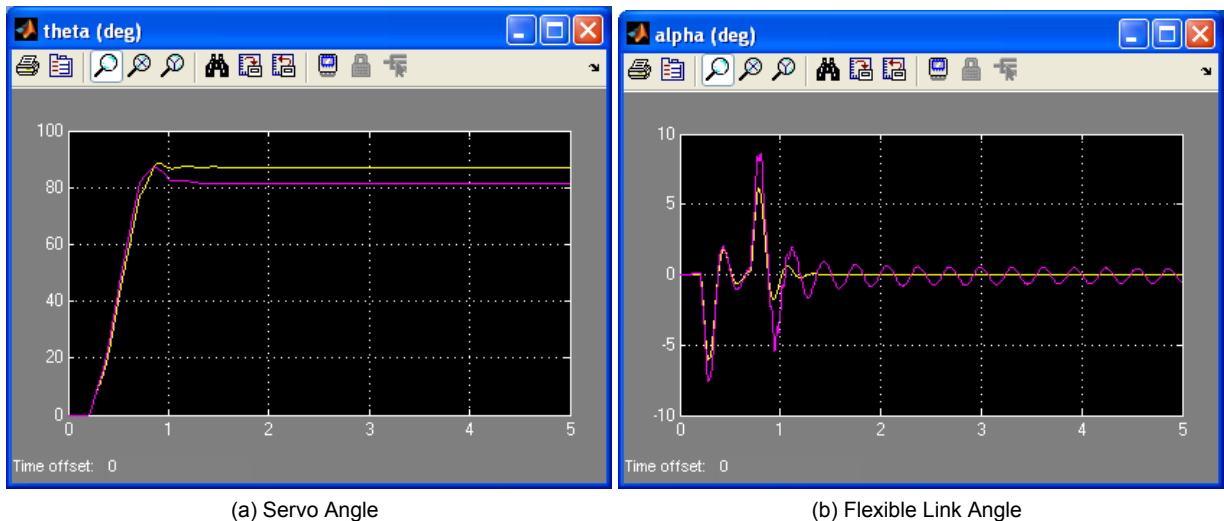


Figure 2.7: Typical Flexible Link Model Validation Response

12. If your simulation and measured response match, go to the next step. If they do not, then there is an issue with your model. Here are some issues to investigate:
 - Ensure the state-space model was entered properly in the script.
 - The stiffness, K_s , found in Section 2.3.1 is not correct. Review your calculations or redo the experiment.
 - Review your model derivation in Section 2.2, e.g., might be a mistake in solving the EOMs.
13. The *theta (deg)* and *alpha (deg)* scopes save their data to the variables *data_theta* and *data_alpha*. For *data_theta*, the time is in *data_theta(:,1)*, the simulated servo angle is in *data_theta(:,2)*, and the measured SRV02 angle is in *data_theta(:,3)*. Similarly for the flexible link response saved in *data_alpha*. Plot the response in a Matlab figure.
14. How well does your model represent the actual system? We want a model that is fairly representative but, having said that, keep in mind that no model is perfect. This is just a quick test to see how well your model represents the actual device. As shown in figures 2.7a and 2.7b, the simulation does not match the measured response perfectly.
15. Give at least one reason why the model does not represent the system accurately.
16. In Matlab, find the open-loop poles (i.e., eigenvalues) of the system using the state-space matrix *A* that is loaded.

Note: These will be required for a pre-lab question in Section 3.3.

2.4 Results

Fill out Table 1 with your answers from your modeling lab results - both simulation and implementation.

Description	Symbol	Value	Unit
Finding Stiffness			
Natural frequency	ω_n		rad/s
Stiffness	K_s		N m/rad
Model Validation			
State-Space Matrix	A		
State-Space Matrix	B		
State-Space Matrix	C		
State-Space Matrix	D		
Open-loop poles	OL		

Table 1: Results

3 CONTROL DESIGN

3.1 Specifications

The time-domain requirements are:

Specification 1: Servo angle settling time: $t_s \leq 0.5$ s.

Specification 2: Servo angle percentage overshoot: $PO \leq 7.5$ %.

Specification 3: Maximum link angle deflection: $|\alpha| \leq 10$ deg.

Specification 4: Maximum control effort / voltage: $|V_m| \leq 10$ V.

These specifications are to be satisfied when the rotary arm is tracking a ± 30 degree angle square wave.

3.2 Background

In Section 2.2, we found a linear state-state space model that represents the Rotary Flexible Link system. This model is used to investigate the stability properties of the Flexible Link system in Section 3.2.1. In Section 3.2.2, the notion of controllability is introduced. Using the Linear Quadratic Regular algorithm, or LQR, is a common way to find the control gain and is discussed in Section 3.2.3. Lastly, Section 3.2.4 describes the state-feedback control used to control the servo position while minimizing link deflection.

3.2.1 Stability

The stability of a system can be determined from its poles ([8]):

- Stable systems have poles only in the left-hand plane.
- Unstable systems have at least one pole in the right-hand plane and/or poles of multiplicity greater than 1 on the imaginary axis.
- Marginally stable systems have one pole on the imaginary axis and the other poles in the left-hand plane.

The poles are the roots of the system's characteristic equation. From the state-space, the characteristic equation of the system can be found using

$$\det(sI - A) = 0 \quad (3.1)$$

where $\det()$ is the determinant function, s is the Laplace operator, and I the identity matrix. These are the *eigenvalues* of the state-space matrix A .

3.2.2 Controllability

If the control input, u , of a system can take each state variable, x_i where $i = 1 \dots n$, from an initial state to a final state then the system is controllable, otherwise it is uncontrollable ([8]).

Rank Test The system is controllable if the rank of its controllability matrix

$$T = [B \ AB \ A^2B \ \dots \ A^nB] \quad (3.2)$$

equals the number of states in the system,

$$\text{rank}(T) = n. \quad (3.3)$$

3.2.3 Linear Quadratic Regular (LQR)

If (A,B) are controllable, then the Linear Quadratic Regular optimization method can be used to find a feedback control gain. Given the plant model in Equation 2.14, find a control input u that minimizes the cost function

$$J = \int_0^{\infty} x(t)'Qx(t) + u(t)'Ru(t) dt, \quad (3.4)$$

where Q and R are the weighting matrices. The weighting matrices affect how LQR minimizes the function and are, essentially, tuning variables.

Given the control law $u = -Kx$, the state-space in Equation 2.14 becomes

$$\begin{aligned} \dot{x} &= Ax + B(-Kx) \\ &= (A - BK)x \end{aligned}$$

3.2.4 Feedback Control

The feedback control loop that in Figure 3.1 is designed to stabilize the servo to a desired position, θ_d , while minimizing the deflection of the flexible link.

The reference state is defined

$$x_d = [\theta_d \ 0 \ 0 \ 0] \quad (3.5)$$

and the controller is

$$u = K(x_d - x). \quad (3.6)$$

Note that if $x_d = 0$ then $u = -Kx$, which is the control used in the LQR algorithm.

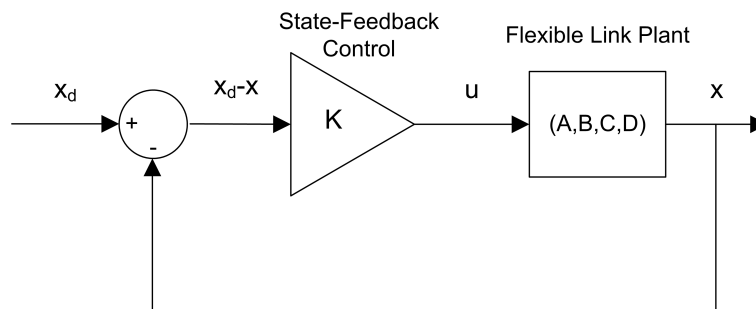


Figure 3.1: State-feedback control loop

3.3 Pre-Lab Questions

1. Based on your analysis of the system in the Modeling Laboratory (Section 2.3), is the system stable, marginally stable, or unstable? From your experience in Section 2.3, does the stability you determined analytically match how the actual system behaves?
2. Designing a controller with the Linear Quadratic Regular (LQR) technique is an iterative process. In software, you have to tune the Q and R matrices, generate the gain K using LQR, and either simulate the system or implement the control to see if you have the desired response. The relationship between changing Q and R and the closed-loop response is not evident. However, we can have a better idea on how changing the different elements in Q and R will effect the response. We will only be changing the diagonal elements in Q , thus let

$$Q = \begin{bmatrix} q_1 & 0 & 0 & 0 \\ 0 & q_2 & 0 & 0 \\ 0 & 0 & q_3 & 0 \\ 0 & 0 & 0 & q_4 \end{bmatrix}. \quad (3.7)$$

Since we are dealing with a single-input system, R is a scalar value. Using the Q and R defined, expand the cost function given in Equation 3.4.

3. For the feedback control $u = -Kx$, the Linear-Quadratic Regular algorithm finds a gain K that minimizes the cost function J . Matrix Q sets the weight on the states and determines how u will minimize J (and hence how it generates gain K). From your solution in Question 2, explain how increasing the diagonal elements, q_i , effects the generated gain $K = [k_1 \ k_2 \ k_3 \ k_4]$.
4. Explain the effect of increasing R has on the generated gain, K .

3.4 Lab Experiments

The control gain is designed using LQR through simulation first. Once a gain that satisfies the requirements is found, it is implemented on the actual Quanser Flexible Link system.

3.4.1 Control Simulation

Using the linear state-space model of the system and the designed control gain, the closed-loop response can be simulated. This way, we can test the controller and see if it satisfies the given specifications before running it on the hardware platform.

Experiment Setup

The *s.flexgage* Simulink diagram shown in Figure 3.2 is used to simulate the closed-loop response of the Flexible Link using the LQR control developed in Section 3.3.

The *Smooth Signal Generator* block generates a 0.33 Hz square wave (with amplitude of 1) that is passed through a *Rate Limiter* block to smooth the signal. The *Amplitude (deg)* gain block is used to change the desired servo position command. The state-feedback gain K is set in the *LQR Control* gain block and is read from the Matlab workspace. The Simulink *State-Space* block reads the A , B , C , and D state-space matrices that are loaded in the Matlab workspace.

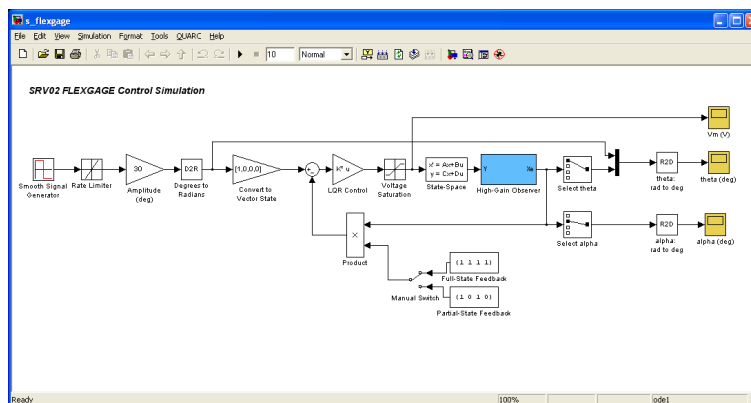


Figure 3.2: *s.flexgage* Simulink diagram used to simulate the state-feedback control

IMPORTANT: Before you can conduct this experiment, you need to make sure that the lab files are configured according to your system setup. If they have not been configured already, go to Section Section 4.4 to configure the lab files first. **Make sure the model you found in Section 2.3.2 is entered in FLEXGAGE_ABCD_eqns_student.m.**

1. Open *setup.flexgage.m* and go down to the *LQR Control* section shown here:

```
%% LQR Control
if strcmp ( CONTROL_TYPE , 'MANUAL' )
    % Set Q and R matrices to get desired response.
    Q = diag([1 1 1 1]);
    R = 1;
    [K,S,E] = lqr(A,B,Q,R);
```

The Q and R are initially set to the default values of:

$$Q = \begin{bmatrix} 1 & 0 & 0 & 0 \\ 0 & 1 & 0 & 0 \\ 0 & 0 & 1 & 0 \\ 0 & 0 & 0 & 1 \end{bmatrix} \text{ and}$$

$$R = 1.$$

- These will not give you the desired response, but run the script to generate the default gain K . Enter the stiffness you found in Section 2.3.1 when prompted.
- Run `s_flexgag` to simulated the closed-loop response with this gain. See figures 3.3a, 3.3b, and 3.3c for the typical response.

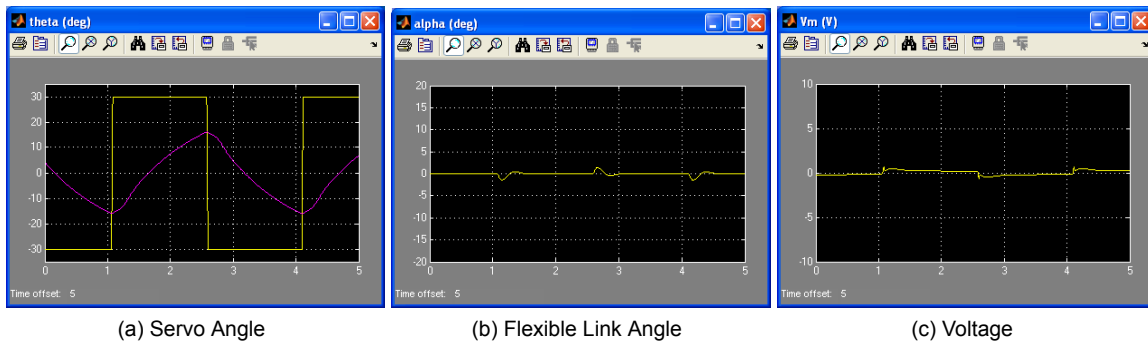


Figure 3.3: Default Simulated Closed-Loop Response

- If $Q = \text{diag}[q_1, q_2, q_3, q_4]$, vary each q_i independently and examine its effect on the gain and the closed-loop response. For example, when increasing q_3 , what happens to θ and α ? Vary each q_i by the same order of magnitude and compare how the new gain K changes compared to the original gain. Keep $R = 1$ throughout your testing. Summarize your results.

Note: Recall your analysis in pre-lab Question 3 where the effect of adjusting Q on the generated K was assessed generally by inspecting the cost function equation. You may find some discrepancies in this exercise and the pre-lab questions.

- Find a Q and R that will satisfy the specifications given in Section 3.1. When doing this, don't forget to keep the dc motor voltage within ± 10 V. This control will later be implemented on actual hardware. Therefore, make sure the actuator is not being saturated. Enter the weighting matrices, Q and R , used and the resulting gain, K .
- Plot the responses from the θ (deg), α (deg), and V_m (V) scopes in a Matlab figure. When the QUARC controller is stopped, these scopes automatically save the last 5 seconds of their response data to the variables `data_theta`, `data_alpha`, and `data_vm`. For `data_theta`, the time is in `data_theta(:,1)`, the setpoint (i.e., desired SRV02 angle) is in `data_theta(:,2)`, and the simulated SRV02 angle is in `data_theta(:,3)`. In the `data_alpha` and `data_vm` variables, the `(:,1)` holds the time vector and the `(:,2)` holds the actual measured data.
- Measure the settling time and percent overshoot of the simulated servo response and the maximum link deflection. Does the response satisfy the specifications given in Section 3.1?
- Briefly explain the procedure you used to find Q and R .

3.4.2 Control Implementation

In this experiment, the servo position is controlled while minimizing the link deflection using the LQR-based control found in Section 3.4.1. Measurements will then be taken to ensure that the specifications are satisfied.

3.4.3 Implementing Partial-State Feedback Control

In this section, the partial-state feedback response of the system is assessed and compared with the full-state feedback control in Section 3.4.2.

1. Run the *setup_flexgagage.m*.
2. Ensure the LQR control gain you settled on in Section 3.4.2 is loaded, i.e., gain K .
3. Open the *q_flexgagage* Simulink diagram. Make sure the *Manual Switch* is set to the *Partial-State Feedback* (downward) position.
4. Go to QUARC | Start to run the controller. The flexible link should be tracking the default ± 30 degree signal.
5. Stop the controller once you have obtained a representative response.
6. As in Section 3.4.2, attach a Matlab figure representing the SRV02 angle and flexible link angle response, as well as the input voltage.
7. Examine the difference between the partial-state feedback (PSF) response and the full-state feedback (FSF) response. Explain why PSF control behaves this way by looking at the *q_flexgagage* Simulink diagram.

3.5 Results

Fill out Table 2 with your answers from your control lab results - both simulation and implementation.

Description	Symbol	Value	Unit
LQR Simulation			
LQR Weighting Matrices	Q		
	R		
LQR Gain	K		
Settling time	t_s		s
Percentage overshoot	PO		%
Maximum deflection	$ \alpha _{\max}$		deg
LQR Implementation			
LQR Weighting Matrices	Q		
	R		
LQR Gain	K		
Settling time	t_s		s
Percentage overshoot	PO		%
Maximum deflection	$ \alpha _{\max}$		deg

Table 2: Results

4 SYSTEM REQUIREMENTS

Required Software

- Microsoft Visual Studio
- Matlab® with Simulink®, Real-Time Workshop, and the Control System Toolbox.
- QUARC® 2.1, or later.

See the QUARC® software compatibility chart at [5] to see what versions of MS VS and Matlab are compatible with your version of QUARC and for what OS.

Required Hardware

- Data-acquisition (DAQ) card that is compatible with QUARC. This includes Quanser Hardware-in-the-loop (HIL) boards such as:
 - Q2-USB
 - Q8-USB
 - QPID
 - QPIDeand some National Instruments DAQ devices (e.g., NI USB-6251, NI PCIe-6259). For a full listing of compliant DAQ cards, see Reference [1].
- Quanser SRV02-ET rotary servo.
- Quanser Rotary Flexible Joint (attached to SRV02).
- Quanser VoltPAQ-X1 power amplifier, or equivalent.

Before Starting Lab

Before you begin this laboratory make sure:

- QUARC® is installed on your PC, as described in [3].
- The *QUARC Analog Loopback Demo* has been ran successfully.
- SRV02 Rotary Flexible Joint and amplifier are connected to your DAQ board as described Reference [7].

4.1 Overview of Files

File Name	Description
Flexible Link User Manual.pdf	This manual describes the hardware of the Rotary Flexible Link system and explains how to setup and wire the system for the experiments.
Flexible Link Workbook (Student).pdf	This laboratory guide contains pre-lab questions and lab experiments demonstrating how to design and implement a position controller on the Quanser SRV02 Flexible Link plant using QUARC[®] .
setup_flexgagem.m	The main Matlab script that sets the SRV02 motor and sensor parameters, the SRV02 configuration-dependent model parameters, and the Flexible Link (i.e., flexgagem) sensor parameters. Run this file only to setup the laboratory.
config_srv02.m	Returns the configuration-based SRV02 model specifications R_m , k_t , k_m , K_g , η_{a_g} , B_{e_q} , J_{e_q} , and η_{a_m} , the sensor calibration constants K_{POT} , K_{ENC} , and K_{TACH} , and the amplifier limits V_{MAX_AMP} and I_{MAX_AMP} .
config_flexgagem.m	Returns the Flexible Link model inertial, J_l , viscous damping, B_l , and sensor calibration constant K_{GAGE} .
d_model_param.m	Calculates the SRV02 model parameters K and τ based on the device specifications R_m , k_t , k_m , K_g , η_{a_g} , B_{e_q} , J_{e_q} , and η_{a_m} .
FLEXGAGE_ABCD_eqns_student.m	Contains the incomplete state-space A, B, C, and D matrices. These are used to represent the Flexible Link system.
calc_conversion_constants.m	Returns various conversions factors.
s_flexgagem.mdl	Simulink file that simulates the Flexible Link system when using a full or partial state-feedback control.
q_flexgagem_id.mdl	When ran with QUARC[®] , this Simulink model measures the Flexible Link angle. The measured response can then be used to find the stiffness of the link.
q_flexgagem_val.mdl	This Simulink model is used with QUARC[®] to compare the Flexible Link state-space model with the measured response from the actual system.
q_flexgagem.mdl	Simulink file that implements a closed-loop state-feedback controller on the actual FLEXGAGE system using QUARC[®] .

Table 3: Files supplied with the SRV02 Flexible Link Control Laboratory.

4.2 Setup for Finding Stiffness

Before beginning in-lab procedure outlined in Section 2.3.1, the `q_flexgagem_id` Simulink diagram must be properly configured.

Follow these steps:

1. Setup the SRV02 with the Flexible Link module as detailed in the Flexible Link User Manual ([7]).
2. Load the Matlab software.
3. Browse through the *Current Directory* window in Matlab and find the folder that contains the file `q_flexgagem_id.mdl`.
4. Open the `q_flexgagem_id.mdl` Simulink diagram, shown in Figure 2.4.

5. **Configure DAQ:** Ensure the HIL Initialize block subsystem is configured for the DAQ device that is installed in your system. By default, the block is setup for the Quanser Q8 hardware-in-the-loop board. See Reference [1] for more information on configuring the HIL Initialize block.

4.3 Setup for Model Validation

Before performing the in-lab exercises in Section 2.3.2, the `q_flexgag_val` Simulink diagram and the `setup_flexgag.m` script must be configured.

Follow these steps to get the system ready for this lab:

1. Setup the SRV02 with the Flexible Link module as detailed in [7].
2. Load the Matlab software.
3. Browse through the *Current Directory* window in Matlab and find the folder that contains the QUARC FLEXGAGE file `q_flexgag_val.mdl`.
4. Open the `q_flexgag_val.mdl` Simulink diagram, shown in Figure 2.6.
5. **Configure DAQ:** Ensure the HIL Initialize block in the *SRV02 Flexible Link* subsystem is configured for the DAQ device that is installed in your system. By default, the block is setup for the Quanser Q8 hardware-in-the-loop board. See Reference [1] for more information on configuring the HIL Initialize block.
6. **Configure Sensor:** The position of the SRV02 load shaft can be measured using either the potentiometer or the encoder. Set the *Pos Src* Source block in `q_flexgag_val`, as shown in Figure 2.6, as follows:
 - 1 to use the potentiometer
 - 2 to use the encoderNote that when using the potentiometer, there will be a discontinuity.
7. **Configure Input:** Set the *Manual Switch* to the DOWN position for a step input or the UP position for a square signal.
8. Open the `setup_flexgag.m` file. This is the setup script used for the FLEXGAGE Simulink models.
9. **Configure setup script:** When used with the Flexible Link, the SRV02 has no load (i.e., no disc or bar) and has to be in the high-gear configuration. Make sure the script is setup to match this setup:
 - `EXT_GEAR_CONFIG` to 'HIGH'
 - `LOAD_TYPE` to 'NONE'
 - Ensure `ENCODER_TYPE`, `TACH_OPTION`, `K_CABLE`, `AMP_TYPE`, and `VMAX_DAC` parameters are set according to the SRV02 system that is to be used in the laboratory.
 - `CONTROL_TYPE` to 'MANUAL'.

4.4 Setup for Flexible Link Control Simulation

Before going through the control simulation in Section 3.4.1, the `s_flexgag` Simulink diagram and the `setup_flexgag.m` script must be configured.

Follow these steps to configure the lab properly:

1. Load the Matlab software.

2. **IMPORTANT:** Make sure the model you found in Section 2.3.2 is entered in FLEXGAGE_ABCD .eqns _student.m.
3. Browse through the *Current Directory* window in Matlab and find the folder that contains the s.flexgage.mdl file.
4. Open s.flexgage.mdl Simulink diagram shown in Figure 3.2.
5. Configure the setup.flexgage.m script according to your hardware. See Section 4.3 for more information.
6. Run the setup.flexgage.m script.
7. Enter the stiffness (K_s) you found in Section 2.3.1.

4.5 Setup for Flexible Link Control Implementation

Before beginning the in-lab exercises given in Section 3.4.2 (or Section 3.4.3), the q.flexgage Simulink diagram and the setup.flexgage.m script must be setup.

Follow these steps to get the system ready for this lab:

1. Setup the SRV02 with the Flexible Link module as detailed in [7] .
2. Load the Matlab software.
3. Browse through the *Current Directory* window in Matlab and find the folder that contains the q.flexgage.mdl file.
4. Open the *q.flexgage.mdl* Simulink diagram shown in Figure 3.4.
5. **Configure DAQ:** Ensure the HIL Initialize block in the *SRV02 Flexible Link* subsystem is configured for the DAQ device that is installed in your system. By default, the block is setup for the Quanser Q8 hardware-in-the-loop board. See Reference [1] for more information on configuring the HIL Initialize block.
6. **Configure Sensor:** The position of the SRV02 load shaft can be measured using the potentiometer or the encoder. Set the *Pos Src* Source block in *q.flexgage*, as shown in Figure 3.4, as follows:
 - 1 to use the potentiometer
 - 2 to use the encoder

Note that when using the potentiometer, there will be a discontinuity.

7. **Configure setup script:** Set the parameters in the *setup.flexgage.m* script according to your system setup. See Section 4.3 for more details.
8. Run the setup.flexgage.m script.

5 LAB REPORT

This laboratory contains two groups of experiments, namely,

1. Modeling the Quanser Rotary Flexible Link system, and
2. State-feedback control using LQR.

For each experiment, follow the outline corresponding to that experiment to build the *content* of your report. Also, in Section 5.3 you can find some basic tips for the *format* of your report.

5.1 Template for Content (Modeling)

I. PROCEDURE

1. *Finding Stiffness*

- Briefly describe the main goal of the experiment.
- Briefly describe the experiment procedure (Section 2.3.1)

2. *Model Validation*

- Briefly describe the main goal of the experiment.
- Briefly describe the experiment procedure (Section 2.3.2)

II. RESULTS

Do not interpret or analyze the data in this section. Just provide the results.

1. Free-oscillation plot from step 3 in Section 2.3.1.
2. Model validation plot from step 13 in Section 2.3.2.
3. Provide applicable data collected in this laboratory (from Table 1).

III. ANALYSIS

Provide details of your calculations (methods used) for analysis for each of the following:

1. Measured link stiffness in step 5 in Section 2.3.1.
2. Model discrepancies given in step 15 in Section 2.3.2.

IV. CONCLUSIONS

Interpret your results to arrive at logical conclusions for the following:

1. How does the model compare with the actual system in step 14 of Section 2.3.2, *State-space model validation*.

5.2 Template for Content (Control)

I. PROCEDURE

1. *Simulation*

- Briefly describe the main goal of the simulation.
- Briefly describe the simulation procedure (Section 3.4.1).
- Briefly describe the procedure in step 4 of Section 3.4.1 to examine the effect of variables on the gain and closed-loop response.
- Briefly explain the procedure used to find Q and R in step 8 of Section 3.4.1).

2. *Full-State Feedback Implementation*

- Briefly describe the main goal of this experiment.
- Briefly describe the experimental procedure (Section 3.4.2).
- Briefly explain the procedure used to tune the controller in step 12 of Section 3.4.3.

3. *Partial-State Feedback Implementation*

- Briefly describe the main goal of this experiment.
- Briefly describe the experimental procedure (Section 3.4.3).

II. RESULTS

Do not interpret or analyze the data in this section. Just provide the results.

1. Response plot from step 6 in Section 3.4.1, *Full-state feedback LQR controller simulation*.
2. Response plot from step 7 in Section 3.4.2, for *Full-state feedback LQR controller implementation*.
3. Response plot from step 10 in Section 3.4.2, for *Tuned LQR full-state feedback controller implementation*.
4. Response plot from step 6 in Section 3.4.3, for *Partial-state feedback LQR controller implementation*.
5. Provide applicable data collected in this laboratory (from Table 2).

III. ANALYSIS

Provide details of your calculations (methods used) for analysis for each of the following:

1. Settling time and percent overshoot in step 7 in Section 3.4.1, *Full-state feedback LQR controller simulation*.
2. Settling time and percent overshoot in step 8 in Section 3.4.2, for *Full-state feedback LQR controller implementation*.
3. Settling time and percent overshoot in step 11 in Section 3.4.2, for *Tuned LQR full-state feedback controller implementation*.
4. Comparison between partial-state and full-state feedback in step 7 in Section 3.4.3.

IV. CONCLUSIONS

Interpret your results to arrive at logical conclusions for the following:

1. Whether the controller meets the specifications in step 7 in Section 3.4.1, *Full-state feedback LQR controller simulation*.
2. Whether the controller meets the specifications in step 8 in Section 3.4.2, for *Full-state feedback LQR controller implementation*.
3. Whether the controller meets the specifications in step 11 in Section 3.4.2, for *Tuned LQR full-state feedback controller implementation*.

5.3 Tips for Report Format

PROFESSIONAL APPEARANCE

- Has cover page with all necessary details (title, course, student name(s), etc.)
- Each of the required sections is completed (Procedure, Results, Analysis and Conclusions).
- Typed.
- All grammar/spelling correct.
- Report layout is neat.
- Does not exceed specified maximum page limit, if any.
- Pages are numbered.
- Equations are consecutively numbered.
- Figures are numbered, axes have labels, each figure has a descriptive caption.
- Tables are numbered, they include labels, each table has a descriptive caption.
- Data are presented in a useful format (graphs, numerical, table, charts, diagrams).
- No hand drawn sketches/diagrams.
- References are cited using correct format.

REFERENCES

- [1] Quanser Inc. *QUARC User Manual*.
- [2] Quanser Inc. *SRV02 QUARC Integration*, 2008.
- [3] Quanser Inc. *QUARC Installation Guide*, 2009.
- [4] Quanser Inc. *SRV02 User Manual*, 2009.
- [5] Quanser Inc. *QUARC Compatibility Table*, 2010.
- [6] Quanser Inc. *SRV02 Rotary Flexible Link User Manual*, 2011.
- [7] Norman S. Nise. *Control Systems Engineering*. John Wiley & Sons, Inc., 2008.

Ten modules to teach controls from the basic to advanced level



With the SRV02 Base Unit, you can select from 10 add-on modules to create experiments of varying complexity across a wide range of topics, disciplines and courses. All of the experiments/workstations are compatible with LabVIEW™.

To request a demonstration or a quote, please email info@quanser.com.

©2012 Quanser Inc. All rights reserved. LabVIEW™ is a trademark of National Instruments.



[INFO@QUANSER.COM](mailto:info@quanser.com)

+1-905-940-3575

[QUANSER.COM](http://quanser.com)

Solutions for teaching and research. Made in Canada.